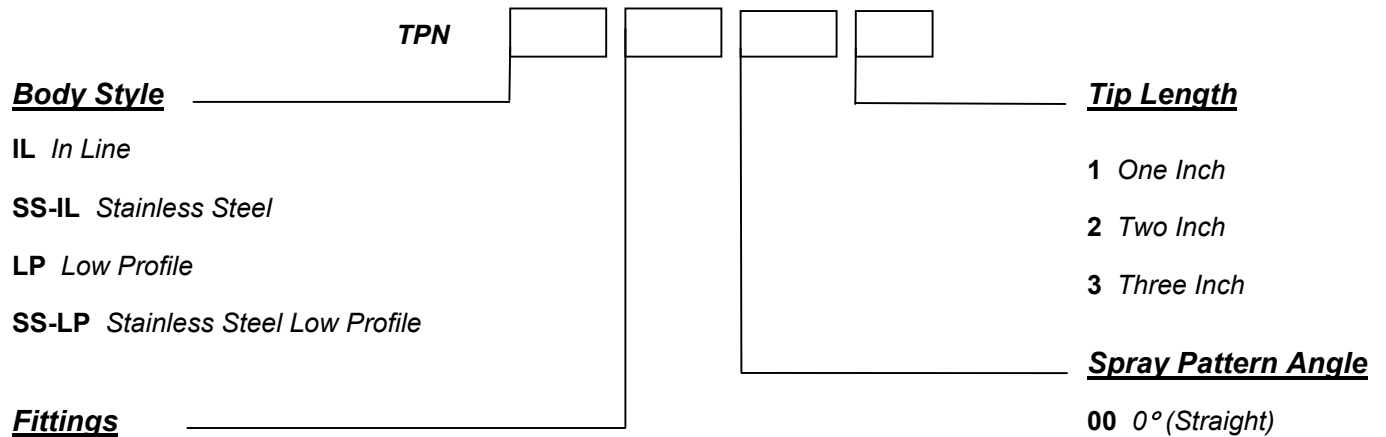


PULSE-SPRAY, TPN NOZZLE
HOW TO ORDER SHEET

Choose from three tip lengths and three spray patterns for versatility in any, pulsed spray, design application. These nozzles feature 1/4-20 tapped (#10 screw clearance) mounting holes and durable, aluminum construction. The **Low Profile** nozzle provides a unique space saving design.

Part Number



Fittings

Oil Lines: Nylon: 3/16" O.D. Tubing Steel Tube: 1/8" O.D. Tubing

Air Lines: Nylon: 1/4" O.D. Tubing Steel Tube: 1/4" O.D. Tubing

NC Nylon Compression Ftg. -**Standard**

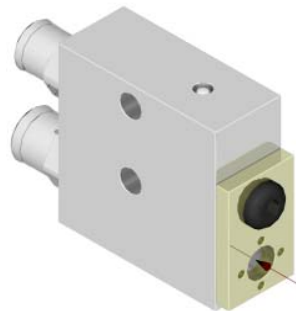
NY Nylon Push In Tube Ftg.

CS Carbon Steel Ftg.(Steel Tubing)

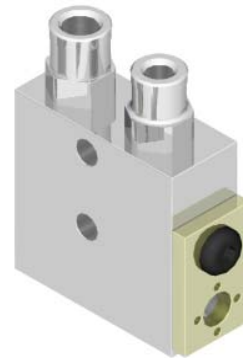
SS Stainless Steel Ftg.(Steel Tubing)

X No Fittings

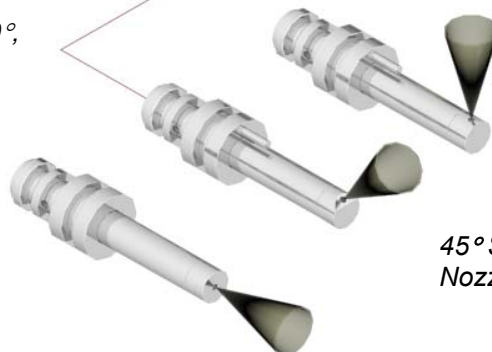
In Line
Nozzle Body



Low Profile
Nozzle Body



45° and 90° Nozzle tips can be rotated 360°, clockwise or counterclockwise, in 90° increments.



90° Spray
Nozzle Tip*

45° Spray
Nozzle Tip*

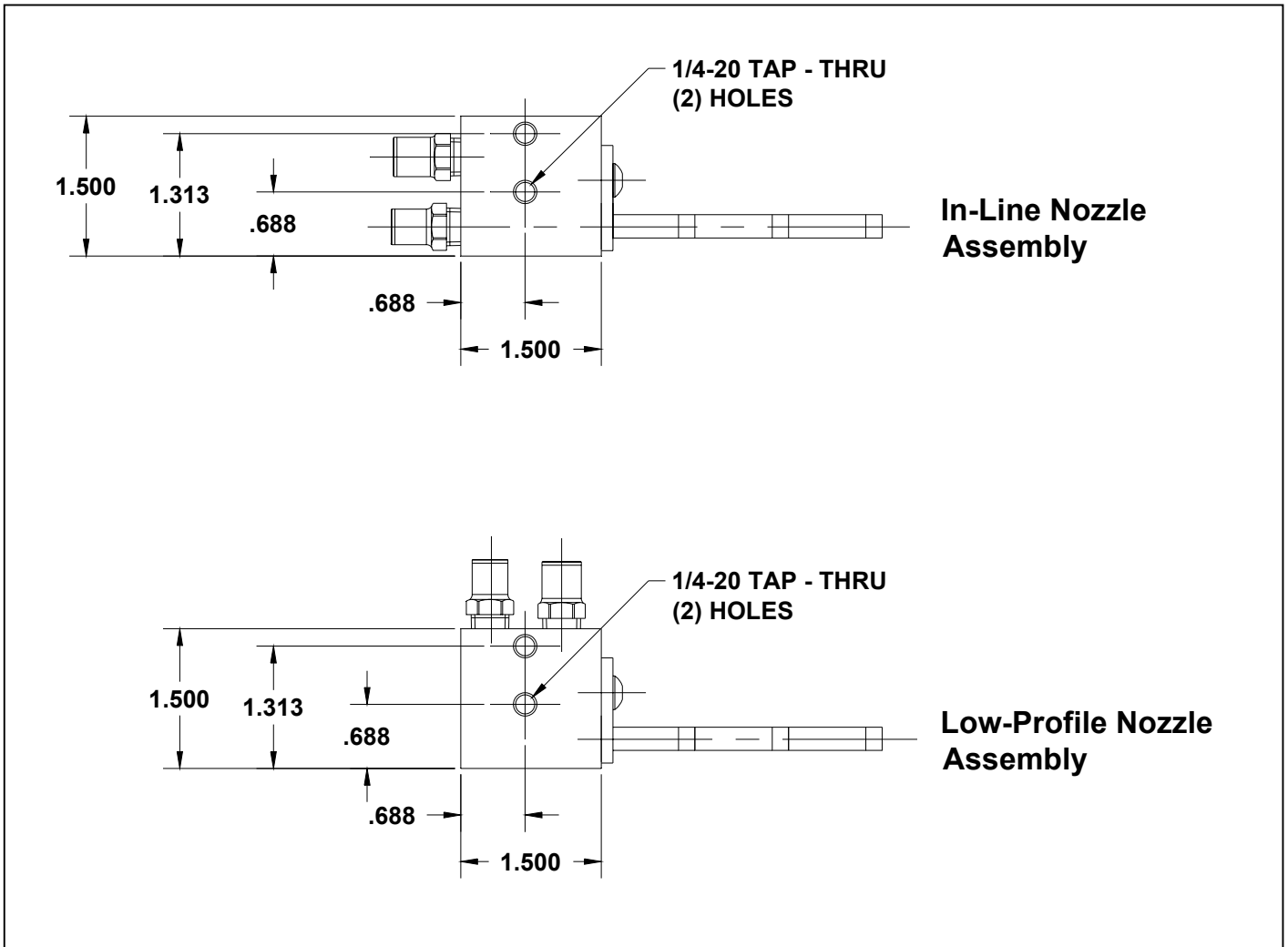
0° Spray
Nozzle Tip

Specifications:

Min./Max. temperature range: -15°F to 250°F (10°C to 121°C)
 Fluid Type: Oil
 Recommended viscosity range: 100SUS – 2000SUS (20cst – 440cst)
 Seal Material: Viton
 Check Ball material: Viton
 Standard Oil Line size: Nylon: 3/16" Dia.
 Steel: 1/8" Dia.
 Standard Air Line size: Nylon/Steel 1/4" Dia.

Applications:

Very slow moving chains
 Trolley wheel, open compliment bearings
 Assembly



Replacement Nozzle Tip Part Numbers:

Tip Length	Spray Pattern Angle		
	0°	45°	90°
1"	TPT-00-1	TPT-45-1	TPT-90-1
2"	TPT-00-2	TPT-45-2	TPT-90-2
3"	TPT-00-3	TPT-45-3	TPT-90-3